

VIRTUAL DATE NIGHT

DALLAS MUSEUM OF ART

COOL SCULPTING

Create an icy sculpture inspired by David Smith's *Cubi XVII*.



David Smith's *Cubi* series reflects a new shift for contemporary sculpture in the 1960s. His abstract art brought together ideas of abstraction from European modernists and postwar psychological experiences. Smith prompts an active relationship between the viewer and the forms, an approach that would play an important role in Minimalist, Process, and Conceptual art of the 1960s and 70s.

Materials:

- Plaster
- Water
- Mixing cup/bucket
- Plastic spoon
- Ice trays/silicone molds
- Newspaper or scrap paper

Spend some time looking at David Smith's *Cubi XVII*, taking note of how Smith addresses balance, form, and abstraction.

STEPS

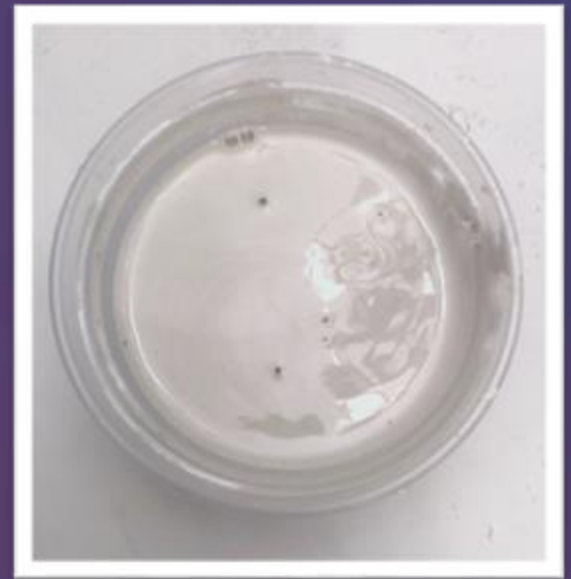
- **Create a working area:** Place a large sheet of paper where you'll be mixing plaster. This will make clean-up easier. Gather your ice trays or molds and place them on top of your paper.



- **Mixing:** Grab a medium-size plastic cup and pour about 1 cup of water into it. Using the spoon, begin adding plaster into the cup with water. Do not mix until you notice an "island" beginning to form above the water line. Once you have an "island," mix the plaster and water until the mixture begins to thicken.



- **Pouring**: Once you've created your plaster mixture, spend about 45 seconds tapping the sides of the cup. You'll notice bubbles begin to rise from the top of your mixture. The tapping will keep air bubbles from forming in your mixture. Begin pouring your mixture into the molds or ice trays. Tap the molds once more to remove any air bubbles.



- **Setting**: After pouring the plaster into your molds, allow your plaster to dry and fully set. The drying time will vary depending on the amount of plaster used and the size of the mold. The molds in the image at right took about one and a half hours to dry.



- **Unmolding**: Once your plaster has set, carefully remove your plaster shapes from the molds by popping each of the molds from the back side.



- **Design**: Using all your set plaster pieces, play around with the components and design the overall shape of your sculpture. If you would like, draw out your form. Pay attention to the parts that need to join and how all the pieces will balance and work together.



- **Sculpting**: Once you've decided on the form your sculpture will take, make a small mixture of water and plaster, this time adding more plaster until you achieve a frosting consistency. This plaster will be the "glue" that holds all your parts together. You'll need to work quickly in this step as plaster sets fast when it is thick. Throw out any leftover plaster in a trash bag, and never pour plaster down the sink.



- **Share**: Lastly, share your thoughts and experiences working together to create the composition of the sculpture. And share your icy creation with others! #DMAatHome

VIRTUAL DATE NIGHT